



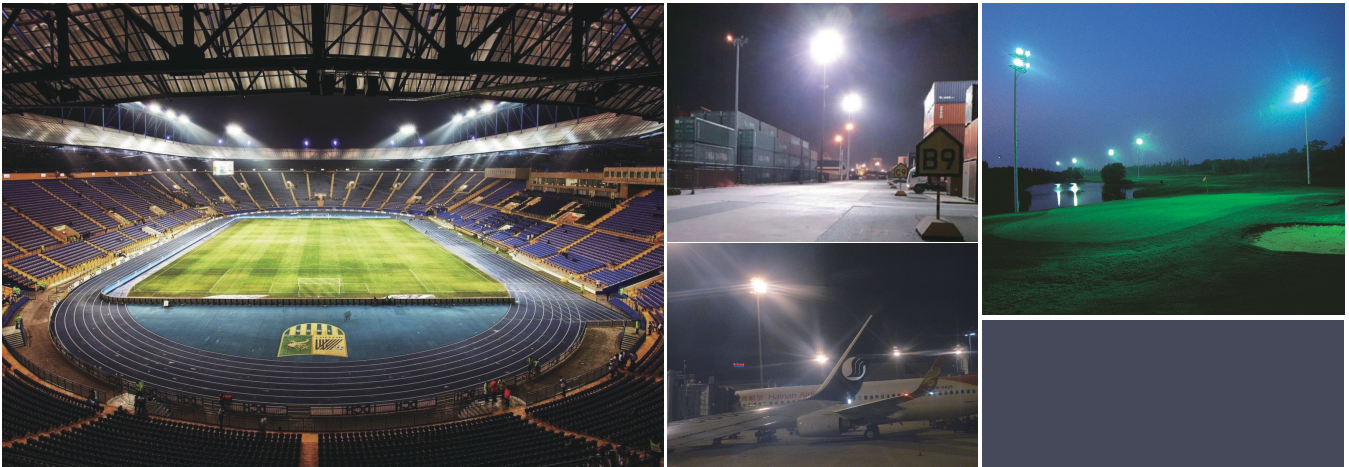
Lumiway II

HIGH POWER

LED High Mast Light

Lumiway II

LED High Mast Light

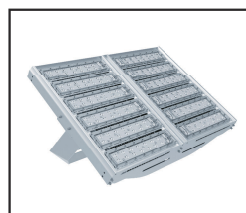


The Lumiway II series LED high mast lights offer high light efficiency up to 120lm/W and excellent uniformity. Sandblasting anodized (silver) heat sink ensure high anti-corrosion capacity, adjustable angle mounting bracket combined with the special beam angle of the lens can be adapted to different area lighting requirements and wide applications.

900W



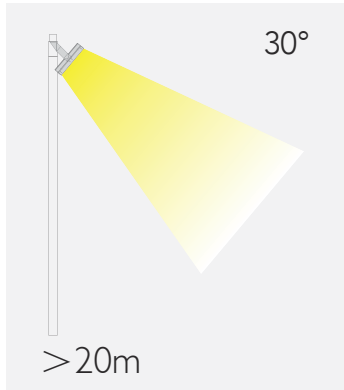
600/450W



300W

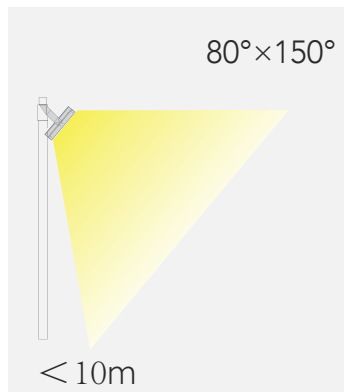
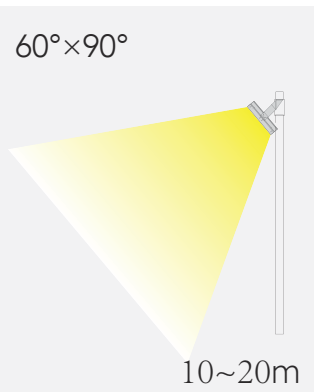


Applications



Football court
Golf court
Port

Basketball court
Tennis court

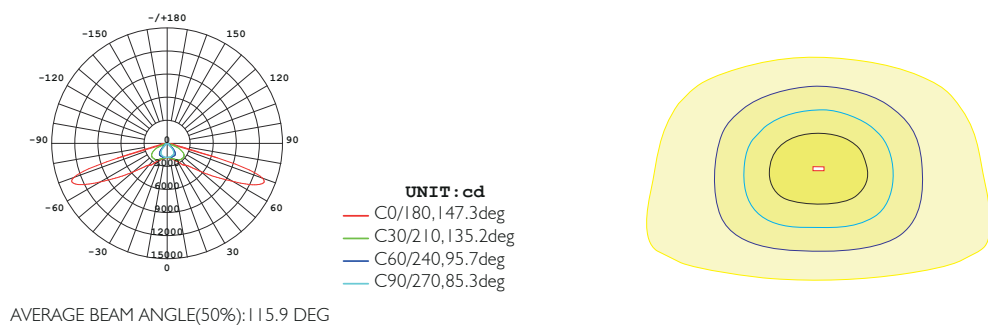
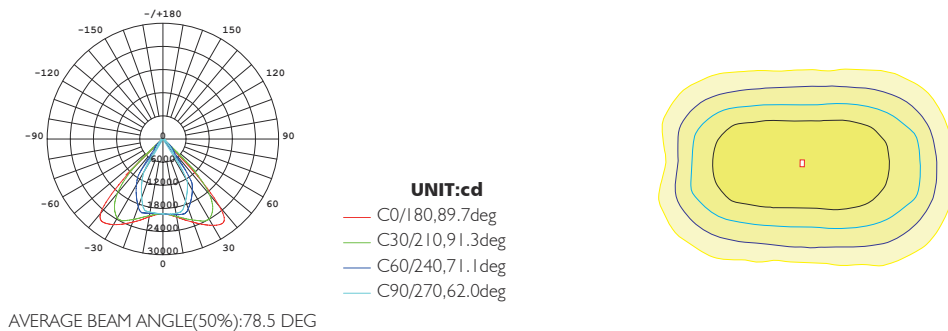
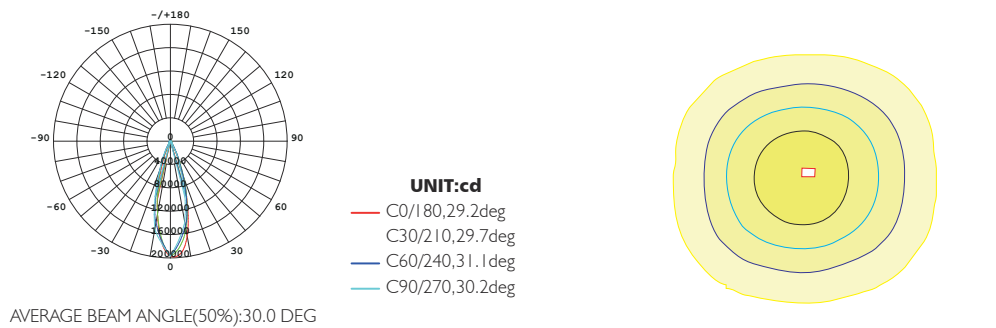


Parking lot
Airport
Highway
Playground

Optical System

Secondary optical designed lens meets the needs of area lighting and ensures the excellent illumination uniformity; Lens based on professional secondary optical design brings much more reasonable light distribution, higher light use efficiency and soft light without glare.

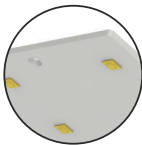
Luminous Intensity Distribution Diagram



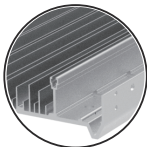
Structure



Lens: modular lens



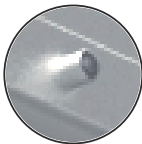
Light source plate: aluminium alloy (5052), thermal conductivity is 1.5 w/mk



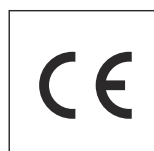
Body: stretching aluminium (6063), sandblasting anodized heat sink



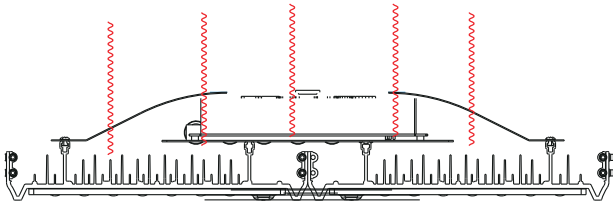
Bracket: cold-rolled steel sheet (SPCC), powder spraying process used on the surface, 3 mm thick



Screws: stainless steel

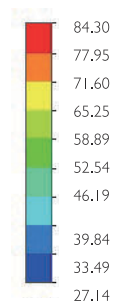
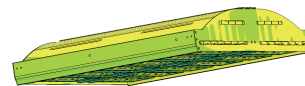
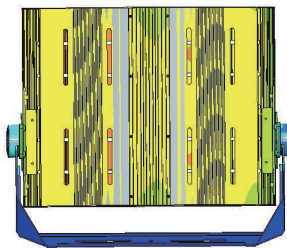
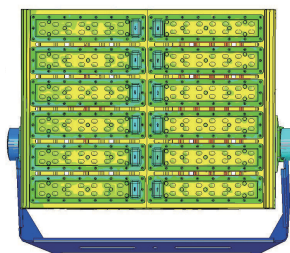


Thermal Management



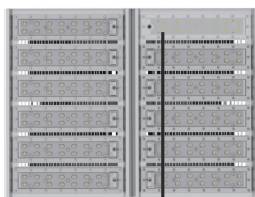
An integrated heat sink housing is designed for rapid thermal dissipation and better protection level, radiator fins provide the most direct heat dissipation channel to make heat flow away as efficiently as possible and guarantee the high performance of LEDs.

Thermal Simulation Analysis



Temp(°C)

Temperature Test Report(600w)



1

3

2

4

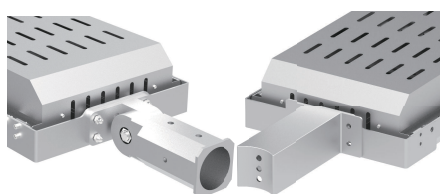
	Temp(°C)
1 Welding spot	80.4
2 Driver	73.7
3 Heat sink bottom	71.8
4 Border	82.3

Test Tool: Multipoint Temperature Indicator
Lighting Time: 4 hours
Environment Temperature: RT 33.7°C
Relative Humidity: 54%

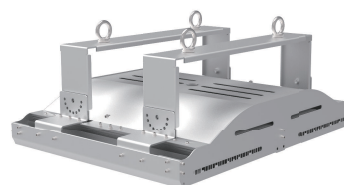
Installations



Sleeve Mounted



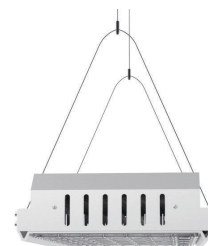
Bracket Mounted



External Driver Mounted

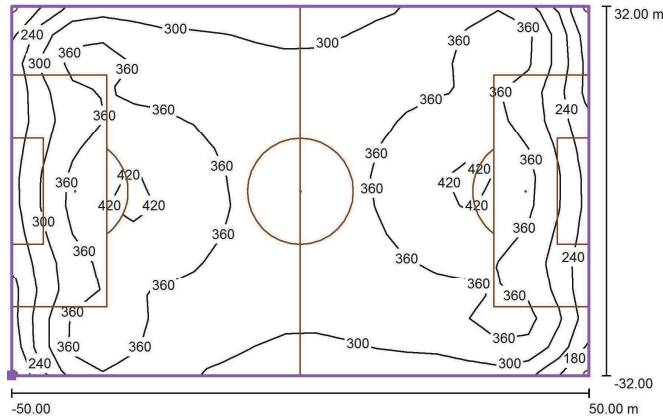


Lifting Rope Mounted



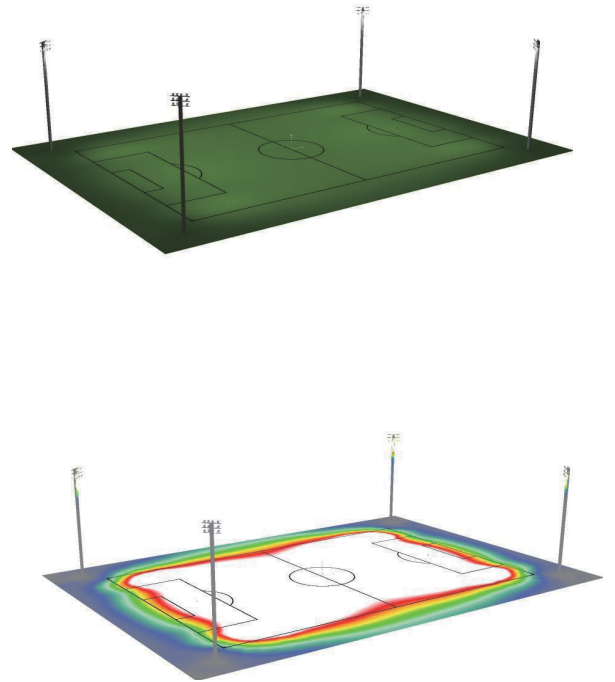
Illumination simulation

Site condition: Football court, 100mX64m
 Mounting Height: 30m
 Luminaires: 48 pieces 900W LED high mast lights
 Beam Angle: 30°
 Average illumination: 336lx

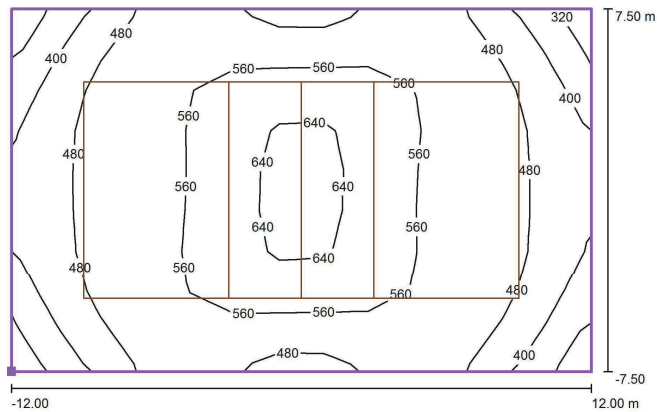


Grid: 19 x 13 Points

E_{av} [lx]	E_{min} [lx]	E_{max} [lx]	u0	E_{min}/E_{max}
336	174	435	0.52	0.40

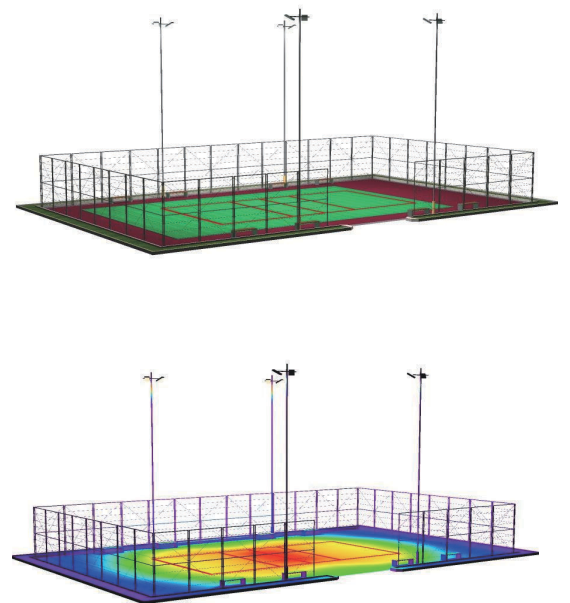
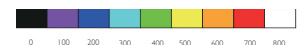


Site condition: Volleyball court, 24mX15m
 Mounting Height: 14m
 Luminaires: 8 pieces 600W LED high mast lights
 Beam Angle: 60°X90°
 Average illumination: 518lx



Grid: 13 x 9 Points

E_{av} [lx]	E_{min} [lx]	E_{max} [lx]	u0	E_{min}/E_{max}
518	319	674	0.62	0.47

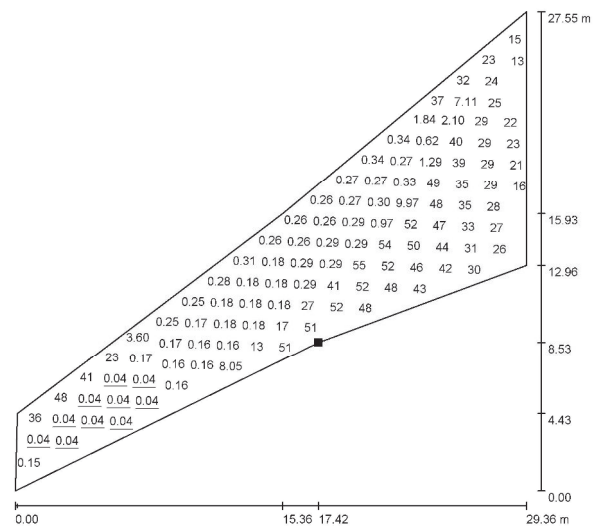
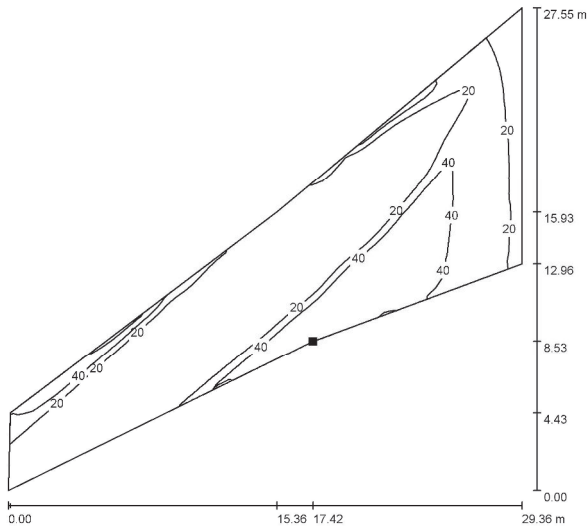
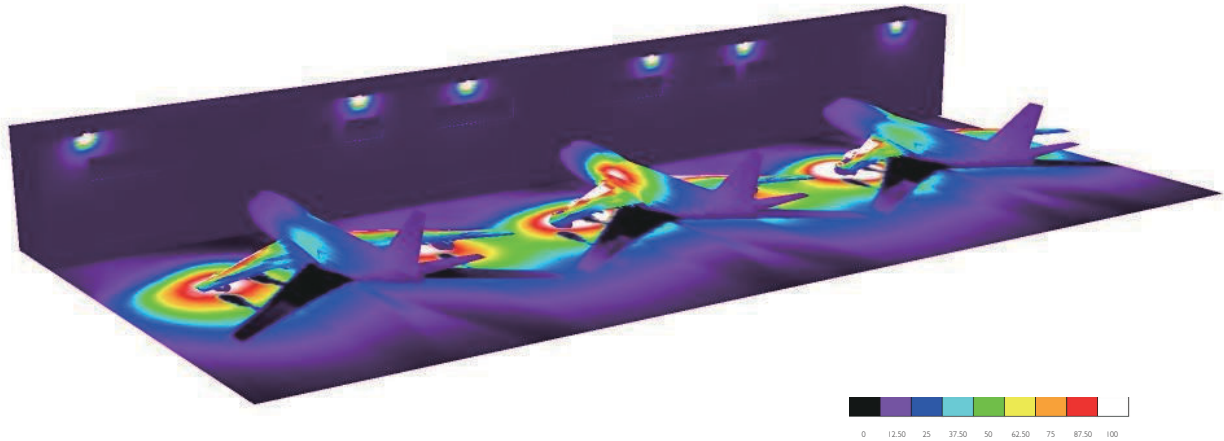


Lumiway II

LED High Mast Light



Site condition: Airport maintenance area, 215mX70m
 Mounting Height: 25m
 Luminaires: 8 pieces 600W LED high mast lights
 Beam Angle: 30°



Grid: 64 x 32 Points

E_{av} [lx]	E_{min} [lx]	E_{max} [lx]	u0	E_{min} / E_{max}
18	0.04	68	68	0.01

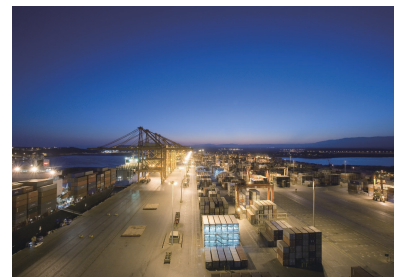
10KV Surge Protection

Surge Protective Devices (SPD) is an appliance designed to protect electrical devices from voltage spikes. According to the buyer's Requirement, SPD is added in the Lumiway II LED high mast light to provide additional protection to the lamp.



Withstand Wind

According to Static loading test report, Lumiway II LED high mast lights can withstand wind speed up to 36m/s, equivalent to the wind level 12.



Salt Spray Test passed

After 48 hours salt spray test, all the screws, heat sink and bracket are not rusty, then Lumiway II is qualified .



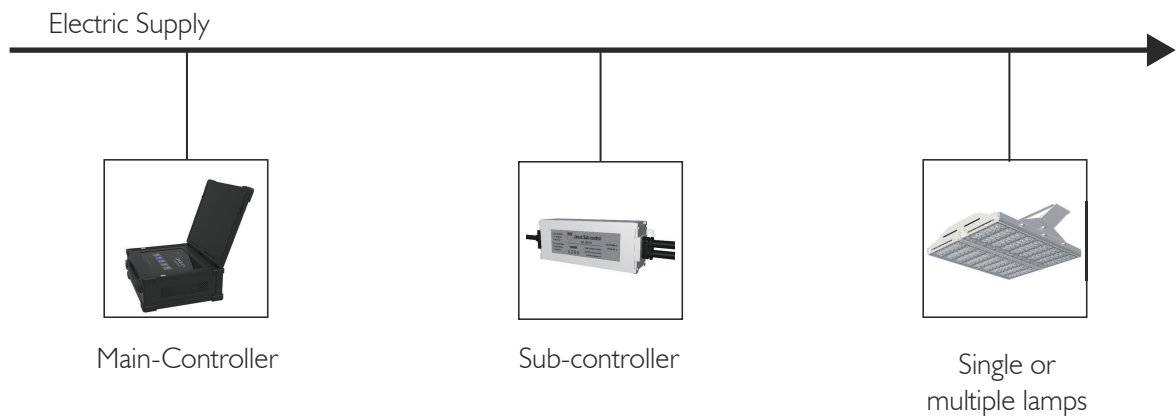
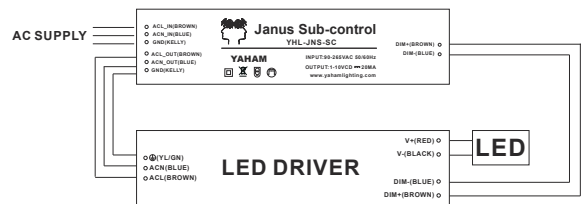
Intelligent Control Extend

Janus

YAHAM designed an industrial LED Lighting System named Janus, which can conduct the centralized management and intelligent control towards the high mast lamp to realize global dimming, group dimming, one-click scene switch, real-time monitoring, automatic dimming and other functions.



Based on PLC (Power Line Carrier) technology, Janus needs no extra signal wire, and signal passes through existing power line. Only need to pair lamps with sub-controller, the whole lighting application can be controlled by the main-controller.



Dimming (0~10V)

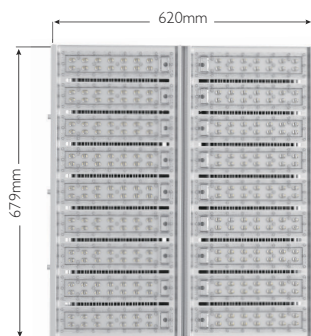
Stepped illumination, energy savings

TECHNICAL DETAILS

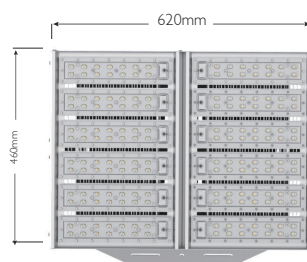
Specifications

- High-performance LED chip
- Input power: 900W, 600W, 450W, 300W optional
- Luminaire lumens up to 99,000lm
- Light efficiency up to 120 lm/W
- 30°, 60° X90°, 80°X150° light distribution available
- CCT: 4500 ~ 5500K (other CCT available)
- CRI > 70Ra
- Span Life of 50,000hrs
- Power factor ≥ 0.95
- Operating range: -40 °C ~ +50 °C
- IP66 protection rating
- Lighting Control ready
- 5 Years Warranty

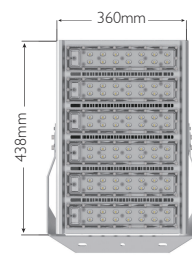
Dimensions



900W



600W/450W



300W

YAHAM[®] Lighting

Yaham Optoelectronics Co., Ltd.

Add: #118 Yongfu Rd, Qiaotou Community,
Fuyong, Bao'an District,
Shenzhen, P.R.China, 518103



+86-755-29435812



sales@yahamlighting.com



<http://yahamlighting.com>